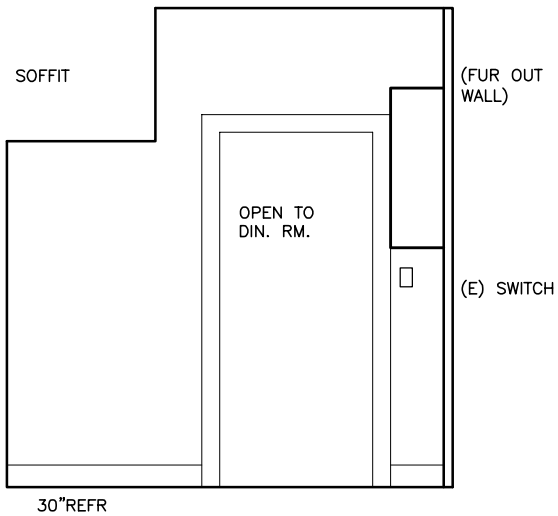
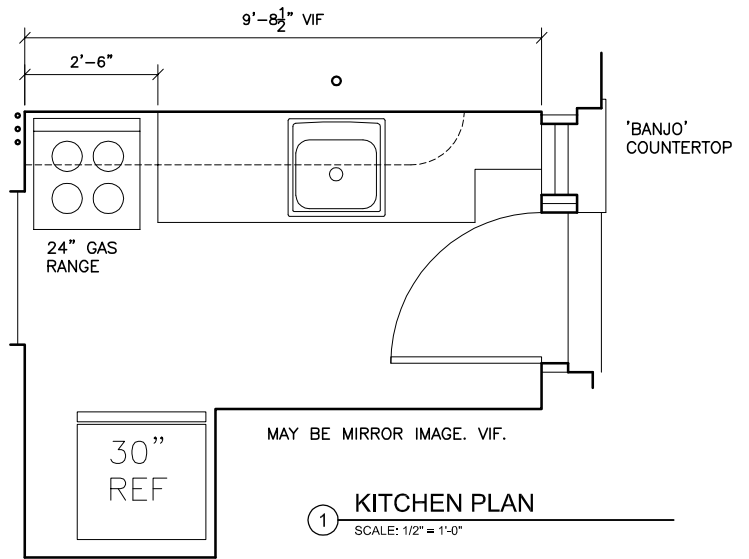
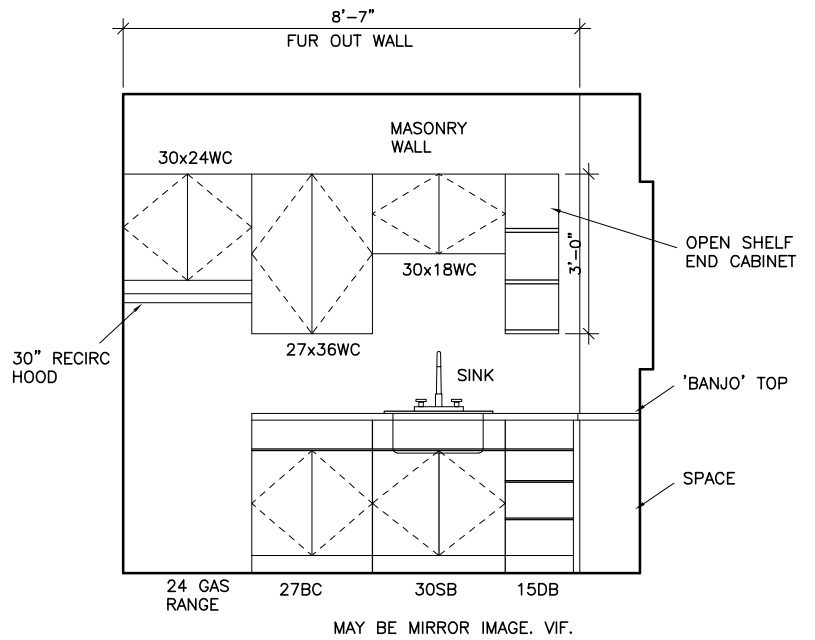


**(C) KITCHEN 1 TYPICAL ELEV.**  
SCALE: 1/2" = 1'-0"



**(A) KITCHEN 1 TYPICAL ELEV.**  
SCALE: 1/2" = 1'-0"



**(B) KITCHEN 1 TYPICAL ELEV.**  
SCALE: 1/2" = 1'-0"