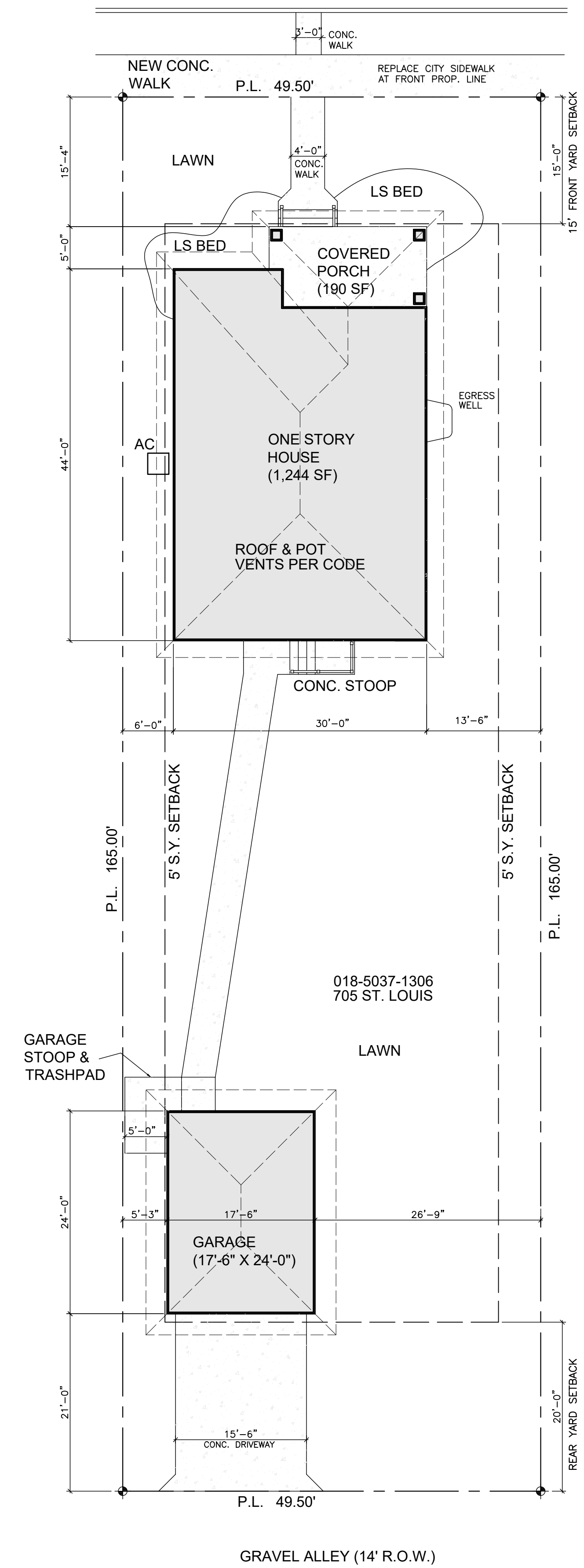
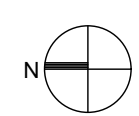
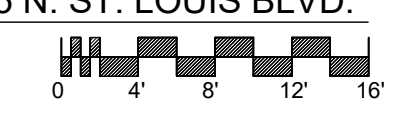


DISTRIBUTE WHOLE SETS ONLY. DO NOT BREAK SET.



1 SITE PLAN - 705 N. ST. LOUIS BLVD.
A1.0 SCALE: 1" = 10' - 0"



THREE BEDROOM RANCH
705 ST. LOUIS BLVD.
SOUTH BEND, IN 46617

SOUTH BEND HERITAGE
803 LINCOLN WAY WEST SOUTH BEND, IN 46616
PHONE (574) 289-1066 FAX (574) 289-4550

REVISIONS

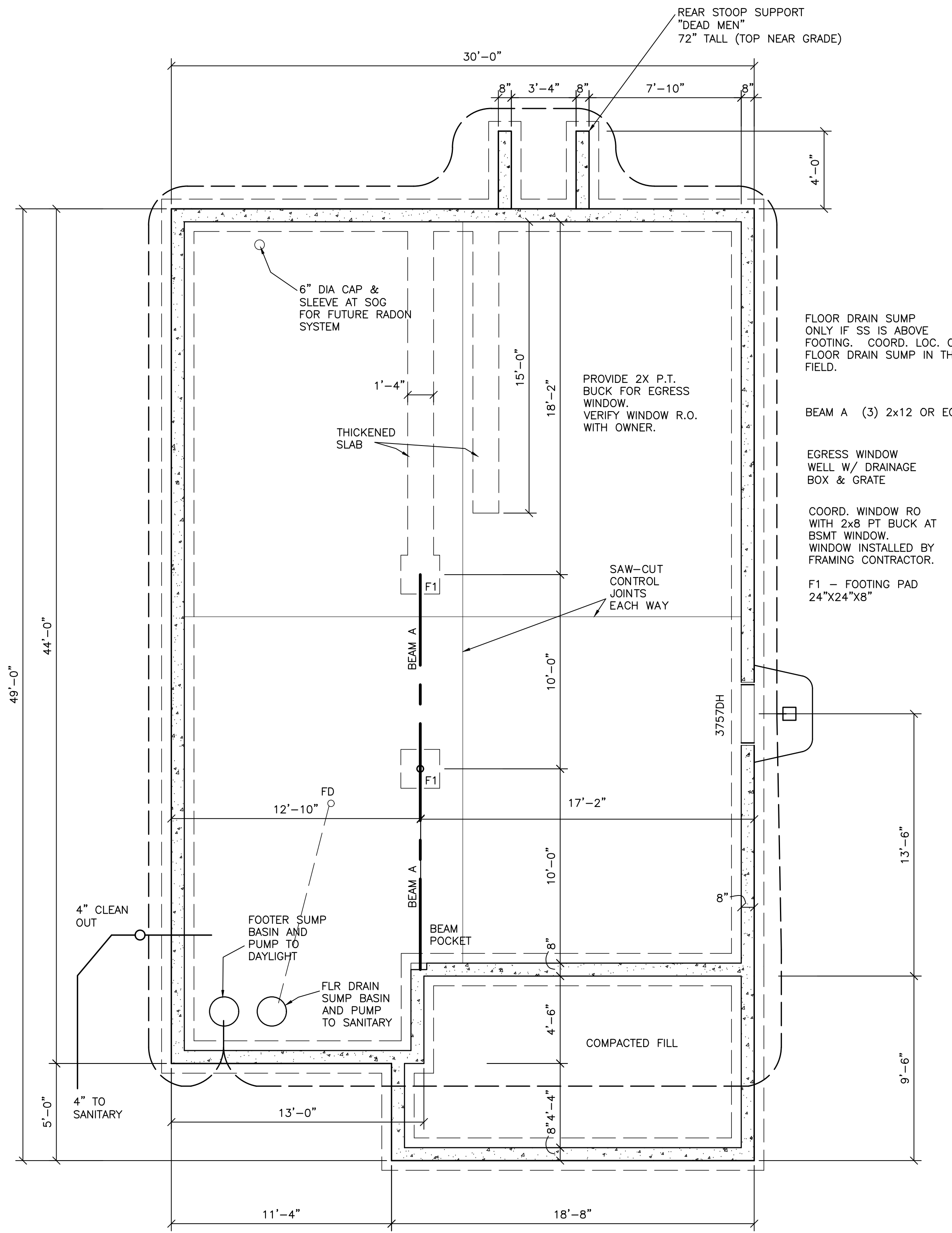
-	-	-

Bid Set
Date: Jan. 11, 2022
Job Number:
Drafting: -
Approval: PDL

Site Plan

Sheet Number:
A1.0

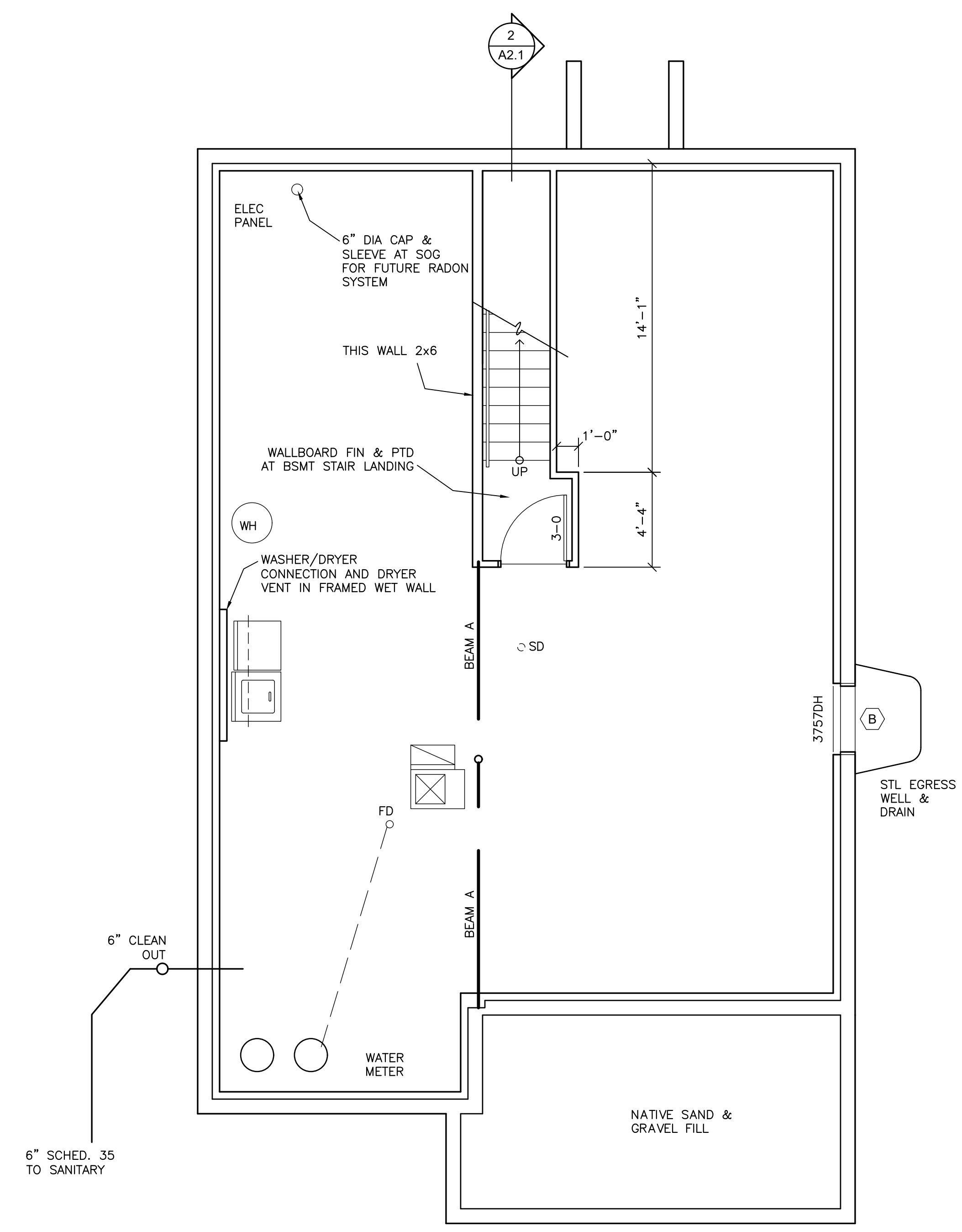
DISTRIBUTE WHOLE SETS ONLY. DO NOT BREAK SET.



1 FOUNDATION PLAN
A3.0 SCALE: 1/4"=1'-0"

CORRUGATED STEEL AREA WELL TO BE MONARCH STIF BACK II - SB11 49 36 60 EGRESS WITH ACCESSORY GRATE AND LADDER.

IF FOUND SANITARY SEWER LATERAL IS ABOVE FOOTING, ENTER FOUNDATION AS NOTED ON PLAN.



2 BASEMENT PLAN
A3.0 SCALE: 1/4"=1'-0"

SOUTH BEND HERITAGE
803 LINCOLN WAY WEST SOUTH BEND, IN 46616
PHONE (574) 289-1066 FAX (574) 289-4550

THREE BEDROOM RANCH
705 ST. LOUIS BLVD.
SOUTH BEND, IN 46617

REVISIONS

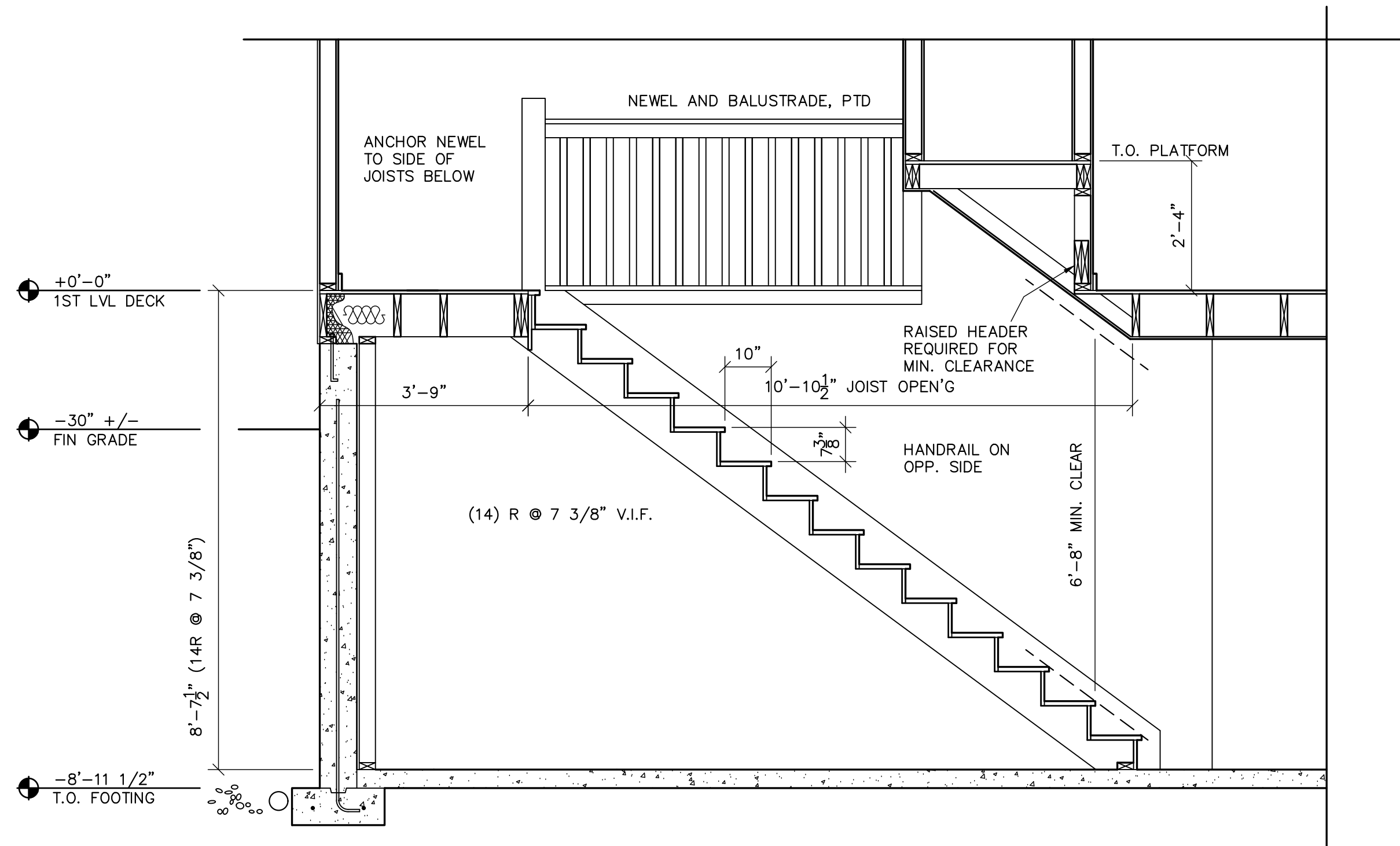
1		
2		
3		
4		
5		
6		
7		
8		
9		
10		

Bid Set
Date: Jan. 11, 2022
Job Number:
Drafting: -
Approval: PDL

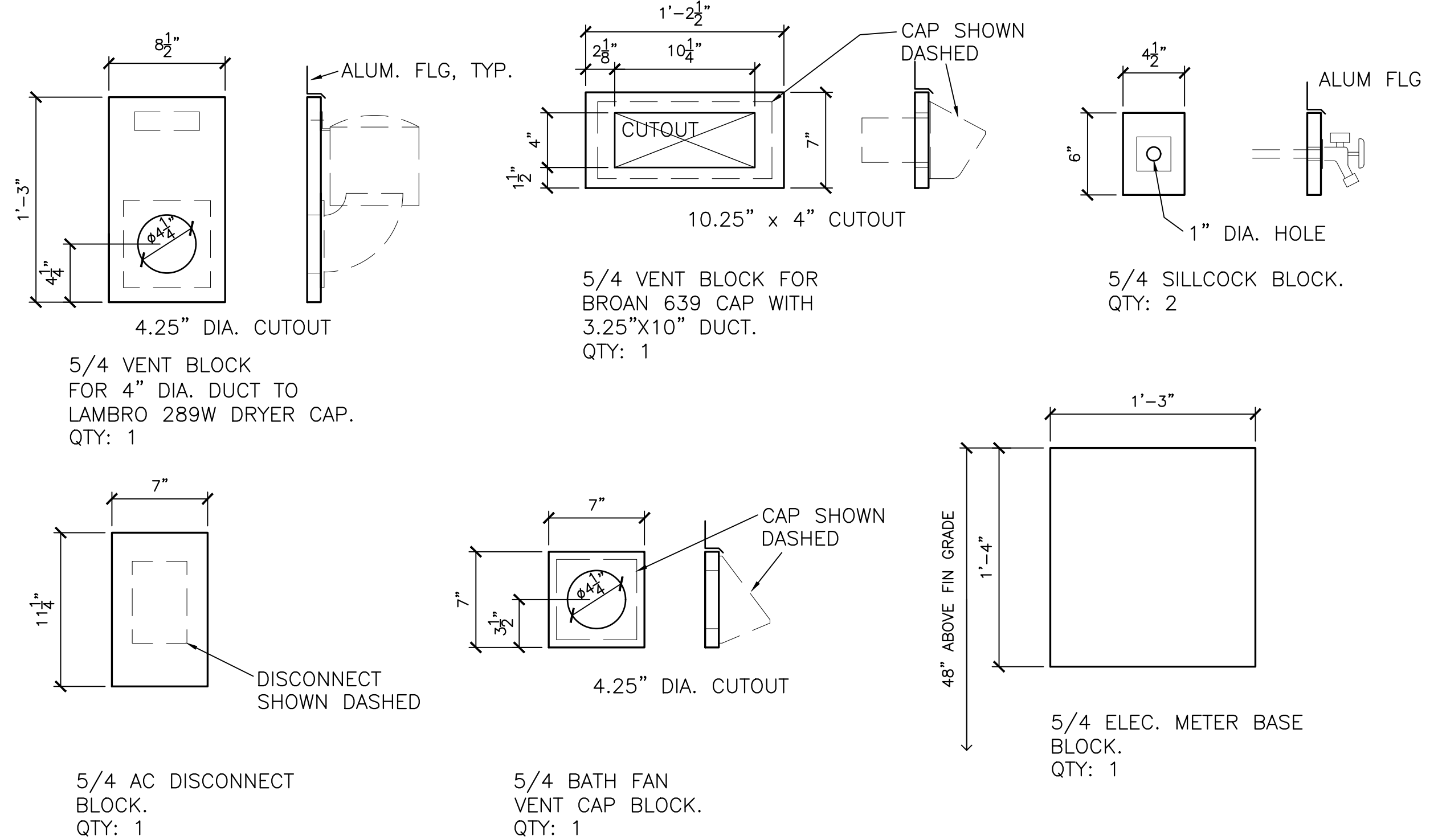
Foundation Plans

Sheet Number:
A2.0

DISTRIBUTE WHOLE SETS ONLY. DO NOT BREAK SET.



2 STAIR DETAIL SECTION
A2.1 SCALE: 1/2"=1'-0"

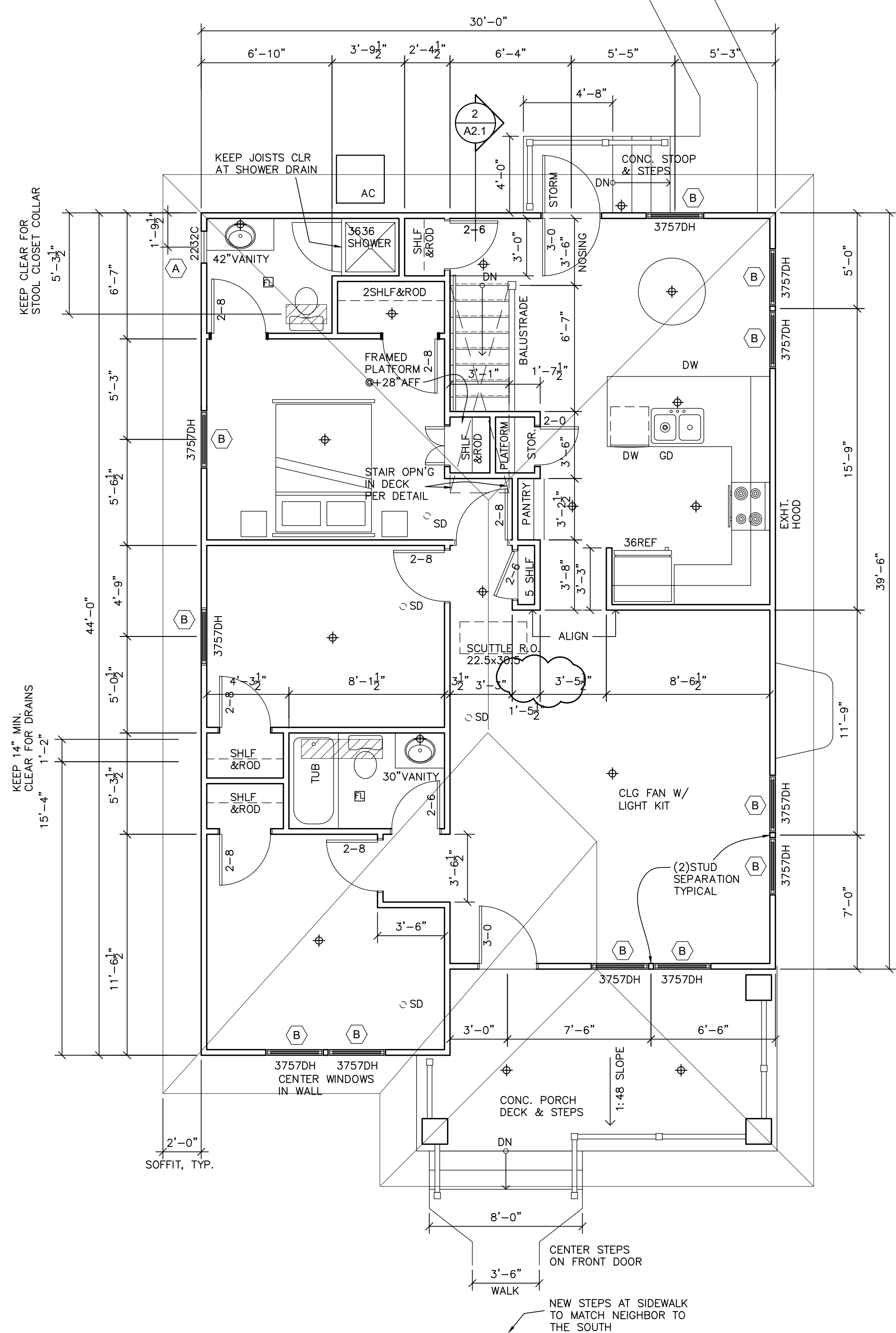


ALL FACTORY AND CUT EDGES TO BE PAINTED COLOR OF HOUSE TRIM.

WATER HEATER EXHAUST, SUMP EXHAUST PIPE, AND FURNACE VENT PIPES DO NOT REQUIRE ESCUTCHION TRIM BLOCKS.

ALL PENETRATIONS THROUGH TYVEK TO BE AIR SEALED PER SPEC.

ALUM. FLG OVER TOP OF ALL TRIM BLOCKS NOTED HERE.



3 FIRST FLR PLAN - 705 ST LOUIS
A3.0 SCALE: 1/4"=1'-0" 1,245 SF

SOUTH BEND HERITAGE
803 LINCOLN WAY WEST SOUTH BEND, IN 46616
PHONE (574) 289-1066 FAX (574) 289-4550

THREE BEDROOM RANCH
705 ST. LOUIS BLVD.
SOUTH BEND, IN 46617

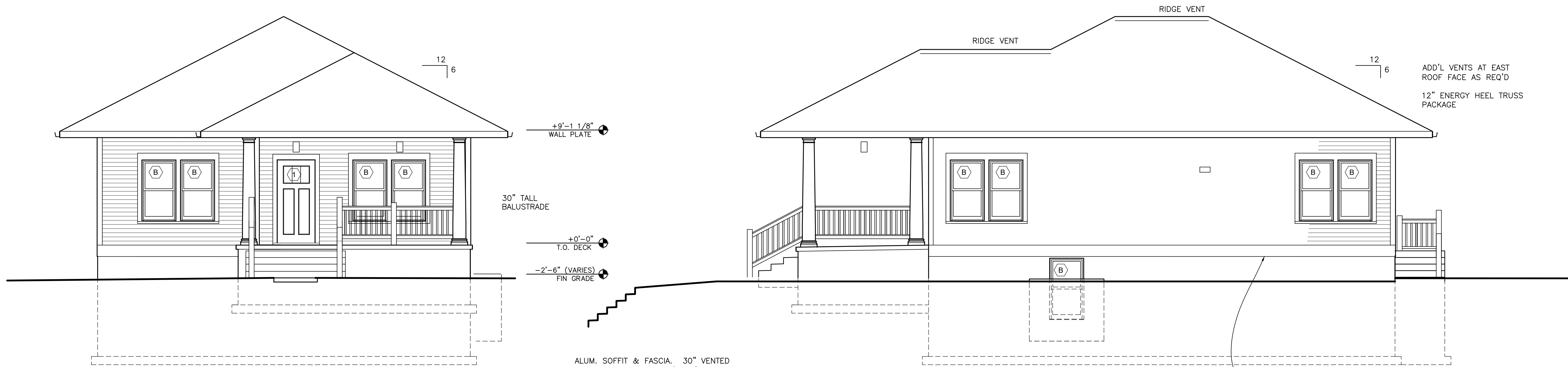
REVISIONS	

Bid Set
Date: Jan. 11, 2022
Job Number:
Drafting:
Approval: PDL

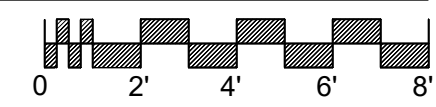
Floor Plans

Sheet Number:
A2.1

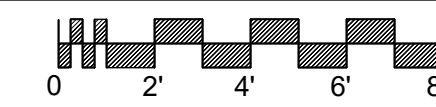
DISTRIBUTE WHOLE SETS ONLY. DO NOT BREAK SET.



1 FRONT ELEVATION
A3.0 SCALE: 1/4"=1'-0"



2 RIGHT SIDE ELEVATION
A3.0 SCALE: 1/4"=1'-0"



ALUM. SOFFIT & FASCIA. 30" VENTED SOFFIT. RIDGE VENT W/ ADD'L POT VENTS AS REQUIRED FOR CODE.

5/4x4 CORNER & WINDOW TRIM, PTD., TYP. LP SMARTSIDE TRIM. WINDOW SILLS TO BE AZEK PVC HISTORIC SILL PROFILE.

5/4x10 TRIM W/ ALUM FLG CAP AT RIM JOIST.

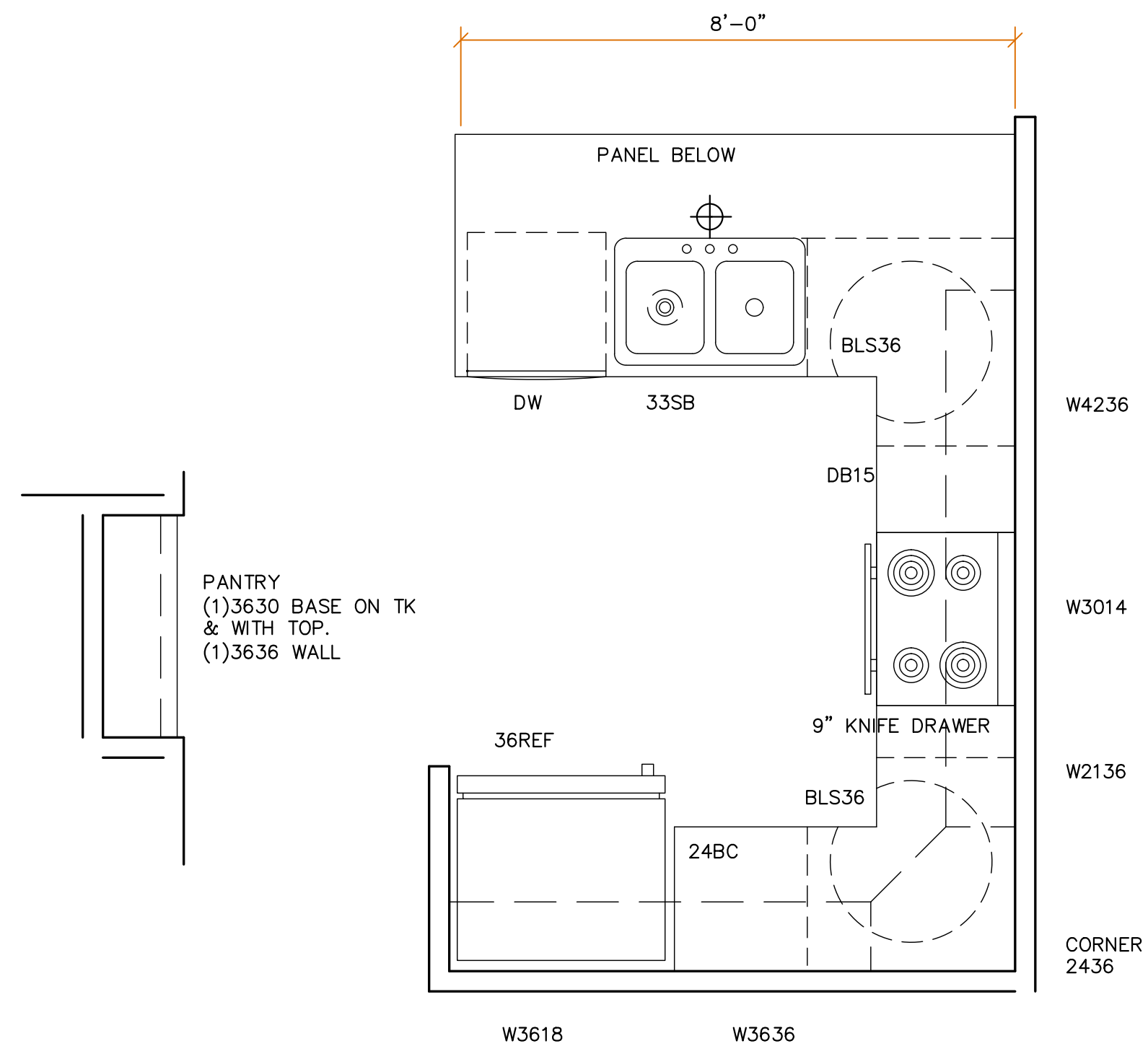
CEMENT BOARD SIDING WITH 4" REVEAL. OVER TYVEK HOUSEWRAP INSTALLED AS AIR BARRIER. DUPONT MANUAL K-27367.

FRONT PORCH COLUMNS & BALUSTRADE PER SPEC. PORCH BALUSTRADE TO BE +32" ABOVE CONC. DECK. STAIR RAIL TO BE PER CODE.

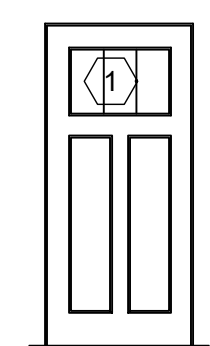
FRONT PORCH ELEV. @ MIN. +24" ABOVE FIN GRADE.

ALL ENTRY DOORS TO BE THERMA-TRU CLASSICRAFT CRAFTSMAN STYLE. PTD.

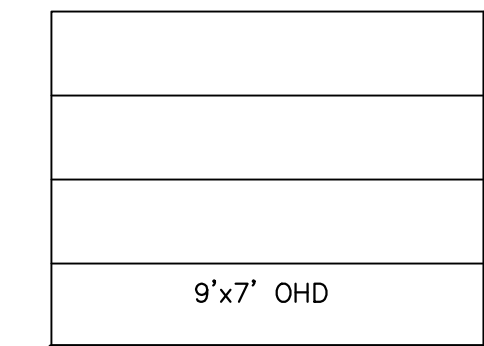
VENEER MASONRY ON FNDN ABOVE GRADE



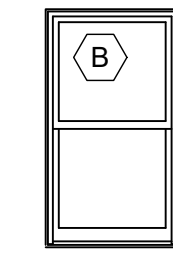
PANTRY
(1)3630 BASE ON TK & WITH TOP.
(1)3636 WALL



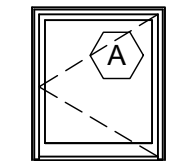
THERMA-TRU CLASSIC CRAFT CANVAS FIBERGLASS ENTRY DOOR. 3'-0" X 6'-8" PAINTED



9' X 7' METAL OVERHEAD DOOR WITH OPERATOR AND REMOTE BUTTONS



ANDERSON 3757 SILVERLINE WINDOWS. DOUBLE HUNG, WHITE. WITH SCREENS.



ANDERSON 2232 SILVERLINE WINDOWS. CASEMENT, WHITE. WITH SCREEN.

SOUTH BEND HERITAGE
803 LINCOLN WAY WEST SOUTH BEND, IN 46616
PHONE (574) 289-1066 FAX (574) 289-4550

THREE BEDROOM RANCH
705 ST. LOUIS BLVD.
SOUTH BEND, IN 46617

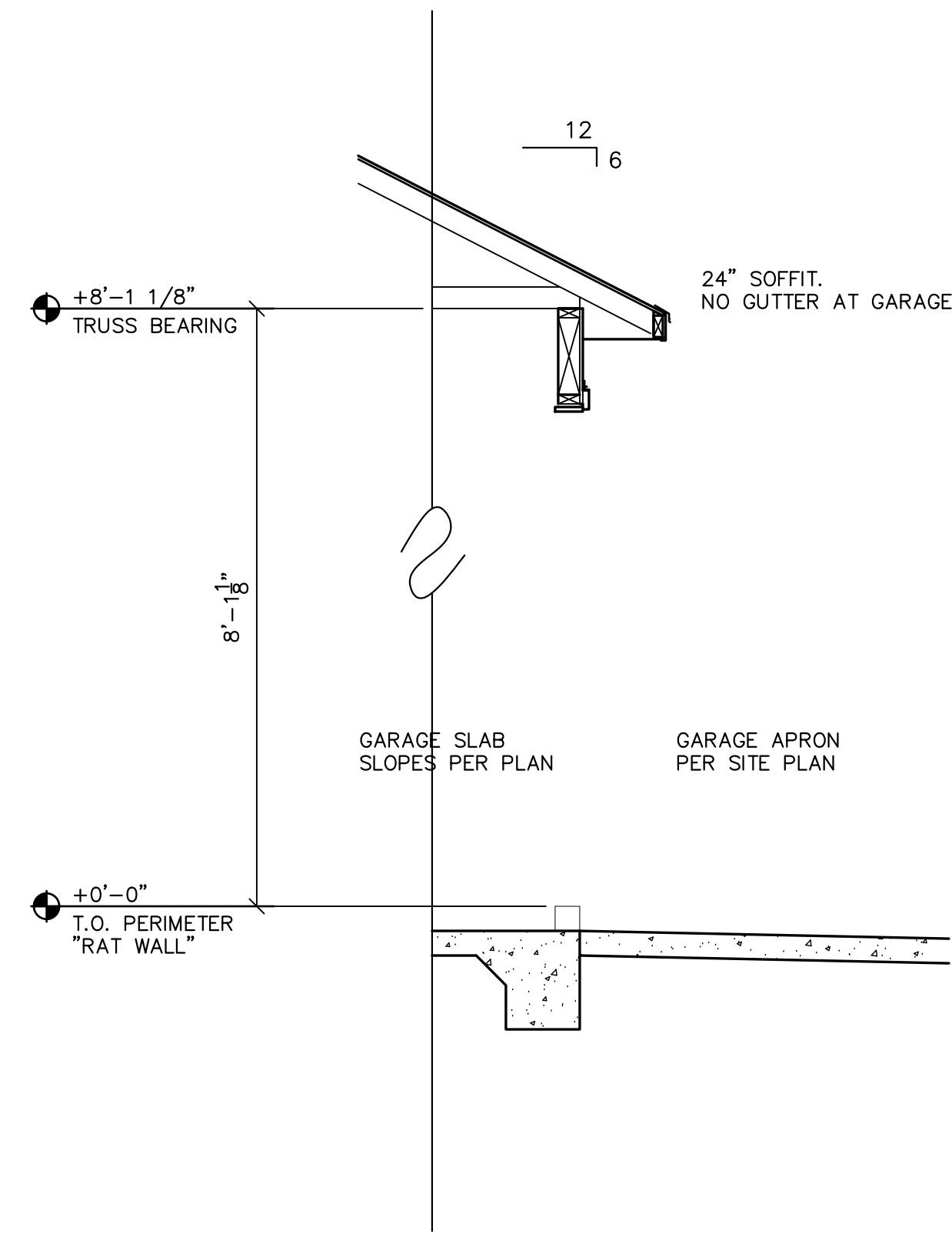
REVISIONS

Bid Set
Date: Jan. 11, 2022
Job Number:
Drafting:
Approval: PDL

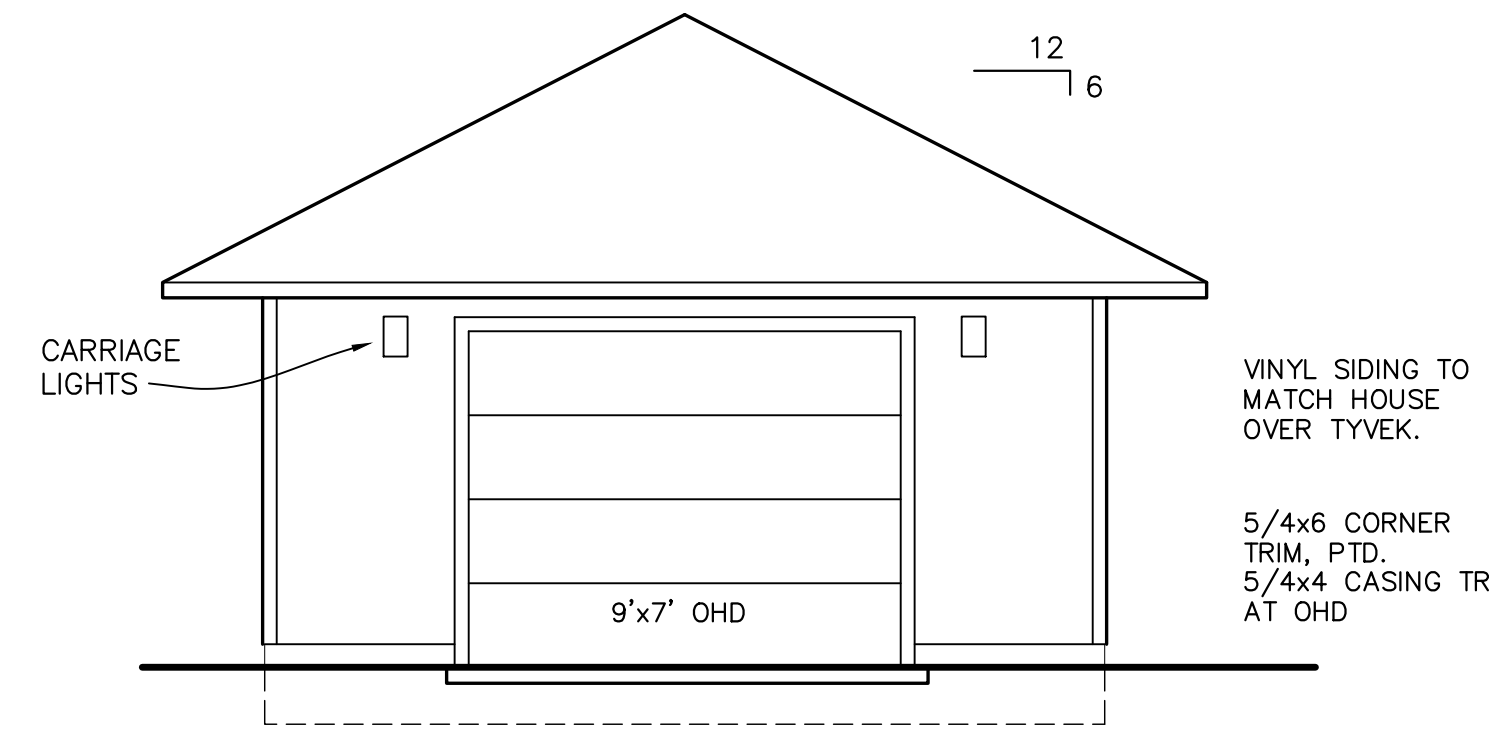
Elevations

Sheet Number:
A3.0

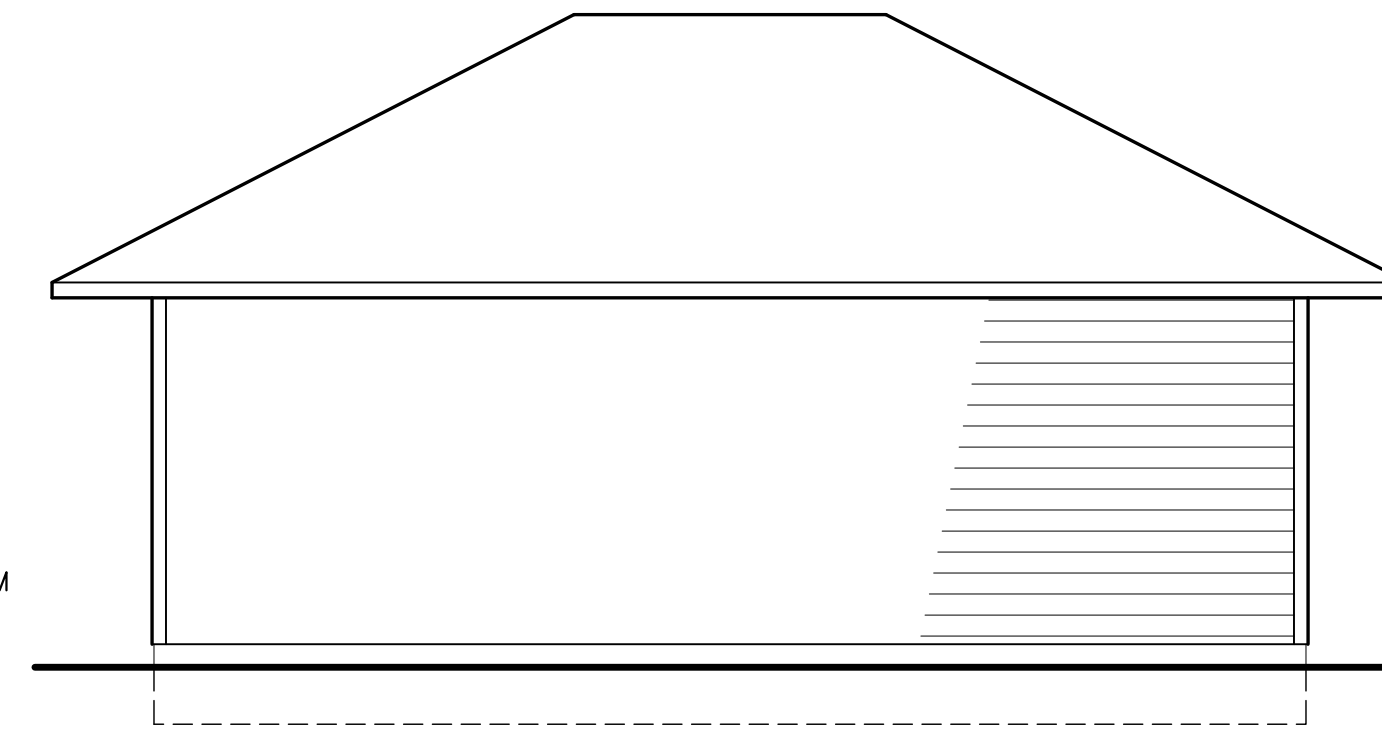
DISTRIBUTE WHOLE SETS ONLY. DO NOT BREAK SET.



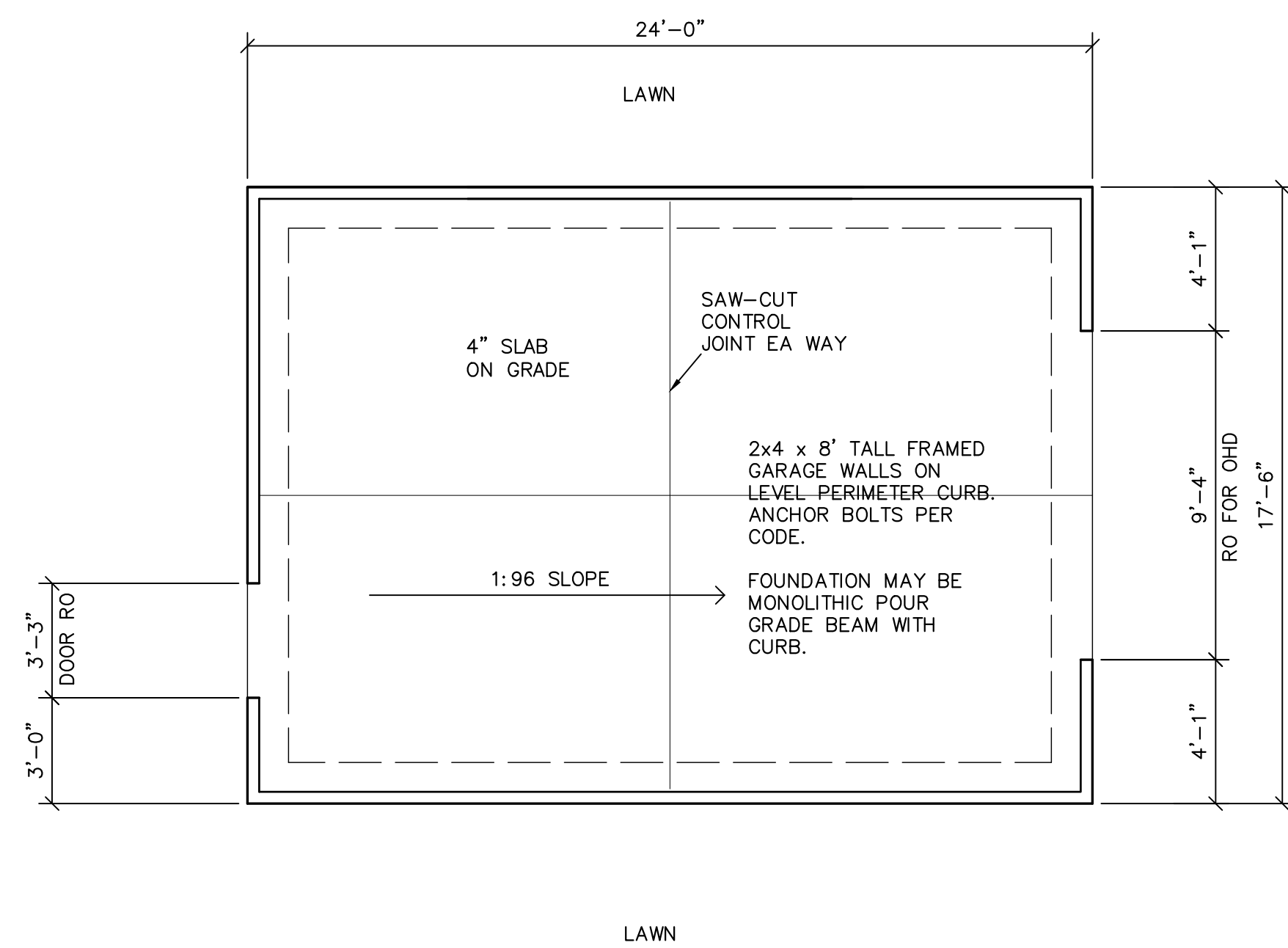
6 GARAGE DETAIL SECTION AT OHD
G1.0 SCALE: 1/2"=1'-0"



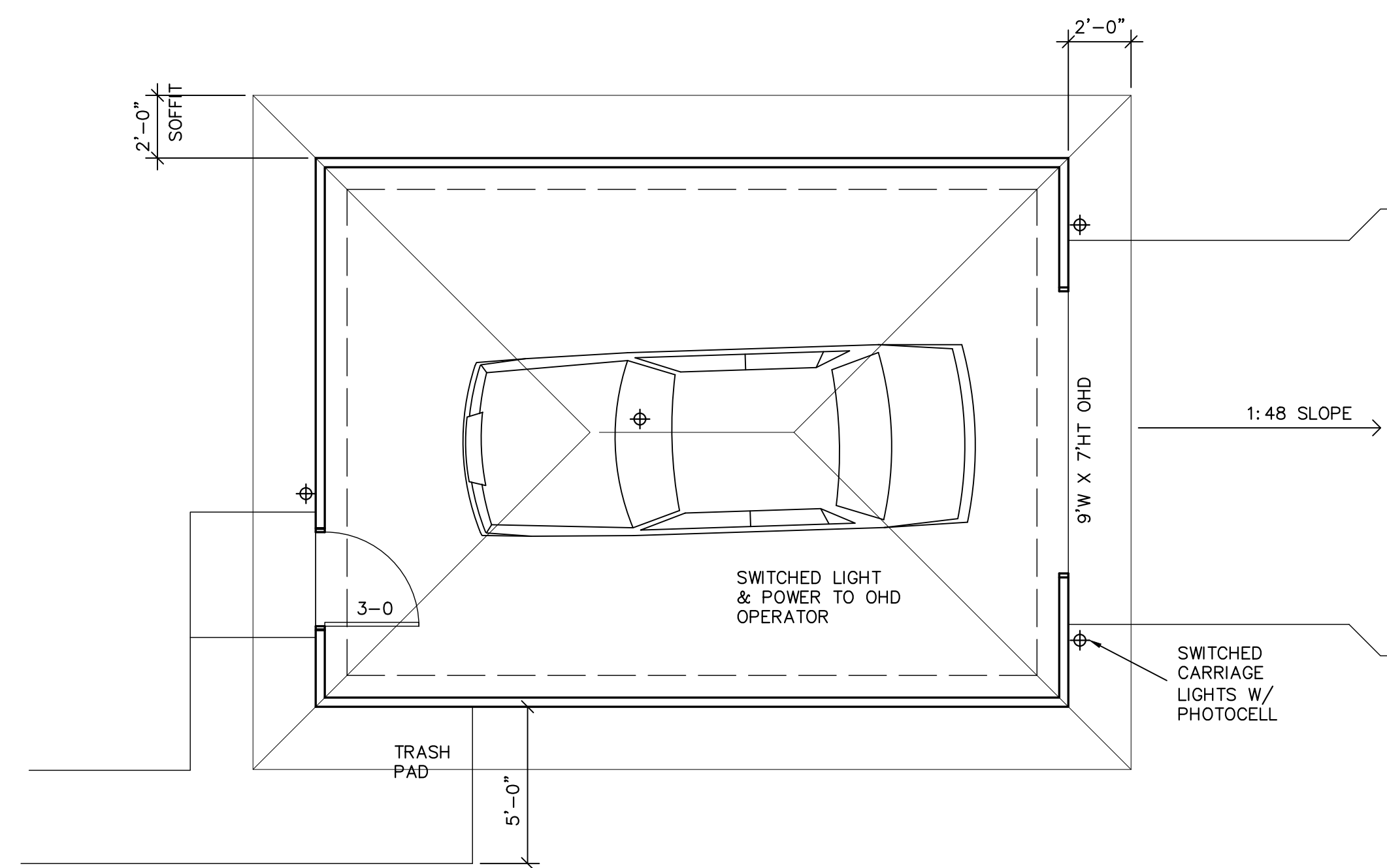
3 GARAGE ELEVATION FROM ALLEY
G1.0 SCALE: 1/4"=1'-0"



4 GARAGE SIDE ELEVATION
G1.0 SCALE: 1/4"=1'-0"



2 GARAGE FNDN PLAN
G1.0 SCALE: 1/4"=1'-0"



1 GARAGE PLAN
G1.0 SCALE: 1/4"=1'-0"

NO ROOF VENTS REQUIRED.
NO GUTTERS OR DOWNSPOUTS

ALUM. FASCIA & NON-VENTED ALUM. SOFFIT

4" VINYL SIDING OVER TYVEK HOUSEWRAP.

5/4x6 CORNER TRIM, PTD.

5/4x4 CASING TRIM AT SERVICE DOOR

THREE BEDROOM RANCH
 705 ST. LOUIS BLVD.
 SOUTH BEND, IN 46617

SOUTH BEND HERITAGE

803 LINCOLN WAY WEST SOUTH BEND, IN 46616
 PHONE (574) 289-1086 FAX (574) 289-4550

REVISIONS

NO.	DATE	DESCRIPTION

Bid Set

Date: Jan. 11, 2022
 Job Number:
 Drafting:
 Approval: PDL

Garage

Sheet Number:

G1.0